

SPECIFICATIONS

Electrical

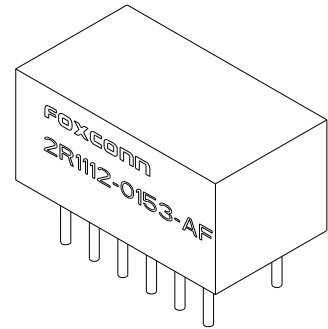
Current Rating: 1.5A max.
Dielectric Withstanding Voltage: 1500VAC

Physical

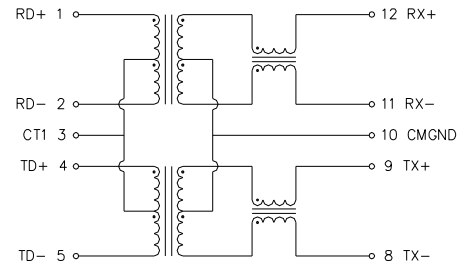
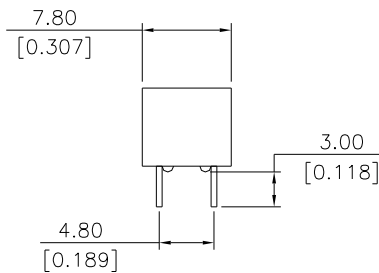
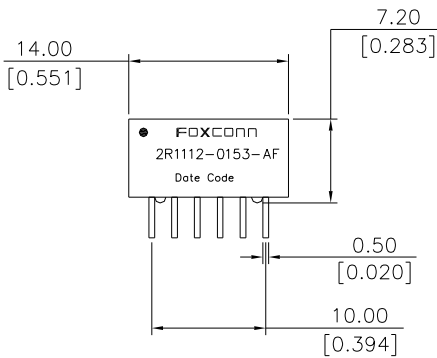
Housing: UL 94V-0, Black LCP,30% Glass
Contact: Phosphor bronze
Operating Temperature: 0 to +70

Lan Transformer

Lan Transformer Series
10/100 BASE-T
FOR 1 PORTS RJ45
12 PINS



DRAWING



ORDERING INFORMATION

